

# Quick Start Guide TouchMonitor 5



**Read Before Unpacking!  
Vor dem Auspacken lesen!**

Full  
Documentation



**RTW**  
EYES ON YOUR AUDIO

EN:

Quick Start Guide for

### **RTW TouchMonitor 5**

Model 220517NT for Dante® AoIP networks

Model 220518NT for Ravenna AoIP networks

© **RTW** January 2025 | Changes without prior notice!

RTW GmbH & Co. KG

Am Wassermann 25 | 50829 Koeln (Cologne) | Germany

Phone +49 221. 70 913-0

sales@rtw.com | www.rtw.com

**Attention** - This quick start guide provides an initial overview of the steps required to quickly set up your TouchMonitor 5.

The detailed operating manual, more documentation and the latest software is available for download at the RTW website (Support > Manuals & Software Downloads > Audio-Monitore > TouchMonitor 5).

DE:

Schnellstart-Anleitung für

### **RTW TouchMonitor 5**

Modell 220517NT für Dante®-AoIP-Netzwerke

Modell 220518NT für Ravenna-AoIP-Netzwerke

© **RTW** 01/2025 | Änderungen vorbehalten!

RTW GmbH & Co. KG

Am Wassermann 25 | 50829 Köln | Germany

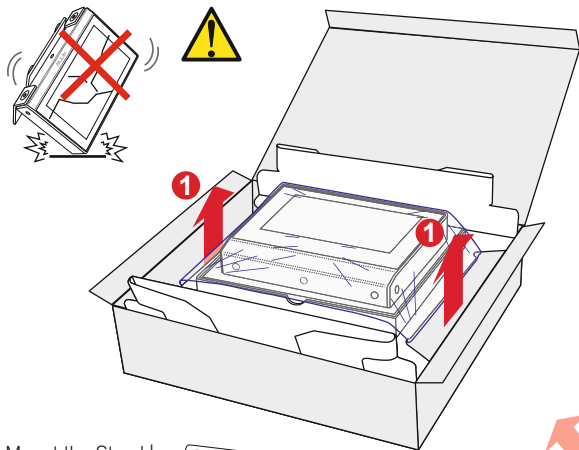
Phone +49 221. 70 913-0

sales@rtw.com | www.rtw.com

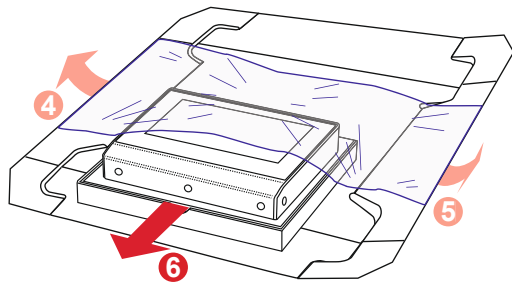
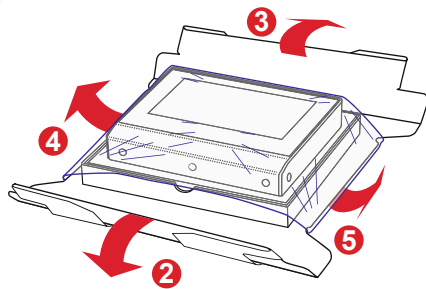
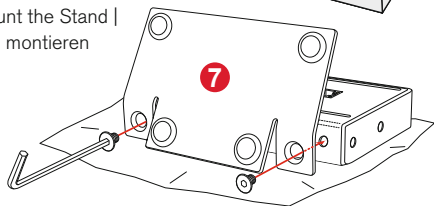
**Achtung** - Diese Schnellstart-Anleitung gibt Ihnen einen ersten Überblick über die Schritte zur schnellen Inbetriebnahme Ihres TouchMonitor 5.

Das ausführliche Benutzerhandbuch, weitere Dokumentationen und die neueste Software stehen auf der RTW-Webseite (Support > Manuals & Software Downloads > Audio Monitors > TouchMonitor 5) zum Download bereit.

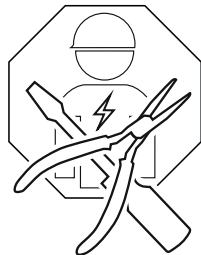
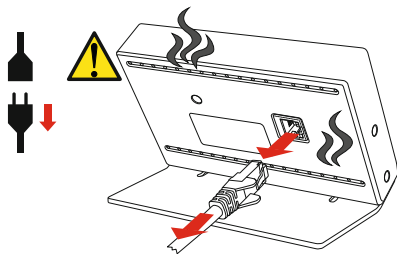
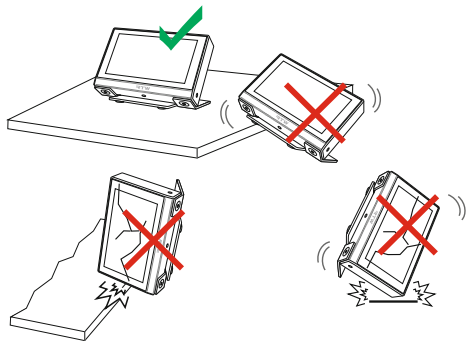
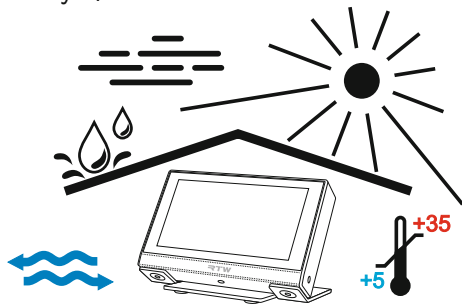
## Unpacking | Auspacken

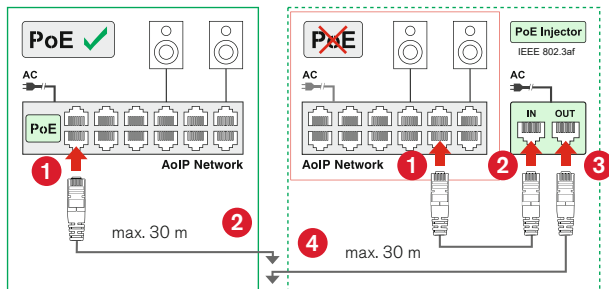


Mount the Stand |  
Fuß montieren

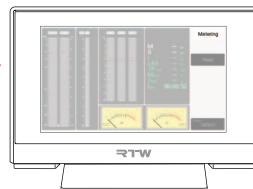
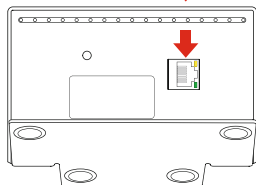


# Safety | Sicherheit





TouchMonitor 5 is certified with CAT 7 cables, but CAT 5E, CAT 6 or CAT 7 can be used.  
Maximum cable length: 30 m



## Accessory | Zubehör

14554-xx Ethernet Power Injector



# Integrate Into Your Audio-Network | Ins Audio-Netzwerk einbinden

Assign your sources to be used on your TouchMonitor 5. |

Wählen Sie die Quellen, die Sie mit Ihrem TouchMonitor 5 verwenden wollen.

**Dante**

Filter Transmitters

Filter Receivers

Receivers (24)

- Digiface-164bcc
- RTW-TM5-6G0GQEF**
  - 01 In
  - 02 In
  - 03 In
  - 04 In**
  - 05 In
  - 06 In
  - 07 In
  - 08 In
  - 09 In
  - 10 In
  - 11 In
  - 12 In
  - 13 In
  - 14 In
  - 15 In
  - 16 In
- RTW-TCS-1ea7d6

**TouchMonitor 5 Inputs**

Session sinks | Ins/Outs | I/O Router | Statistics | Debug

### Configuration

IO: Stream

Label: [ ]

Source: [ ] Manual

Delay (samples): 0

Ignore reflck GMID:  accept source locked to any PTP Master

Channels

Channel	1	2	Outputs
1	<input type="checkbox"/>	<input type="checkbox"/>	1
2	<input type="checkbox"/>	<input checked="" type="checkbox"/>	2
3	<input type="checkbox"/>	<input type="checkbox"/>	3
4	<input type="checkbox"/>	<input type="checkbox"/>	4
5	<input type="checkbox"/>	<input type="checkbox"/>	5
6	<input type="checkbox"/>	<input type="checkbox"/>	6
7	<input type="checkbox"/>	<input type="checkbox"/>	7
8	<input type="checkbox"/>	<input type="checkbox"/>	8
9	<input type="checkbox"/>	<input type="checkbox"/>	9
10	<input type="checkbox"/>	<input type="checkbox"/>	10
11	<input type="checkbox"/>	<input type="checkbox"/>	11
12	<input type="checkbox"/>	<input type="checkbox"/>	12
13	<input type="checkbox"/>	<input type="checkbox"/>	13
14	<input type="checkbox"/>	<input type="checkbox"/>	14

### Session Info

Status

Session name

Playback delay (Auto)

RTSP Host

### Interface 1

RTP status

Clock domain

Address

Payload

### Interface 2

RTP status

Clock domain

Address

Payload

▶ SDP





MAN22500

RTW GmbH & Co. KG  
Am Wassermann 25 | 50829 Koeln (Cologne) | Germany  
Phone: +49 221. 70 913-0  
Internet: [www.rtw.com](http://www.rtw.com) | E-Mail: [sales@rtw.com](mailto:sales@rtw.com)

**RTW**  
EYES ON YOUR AUDIO